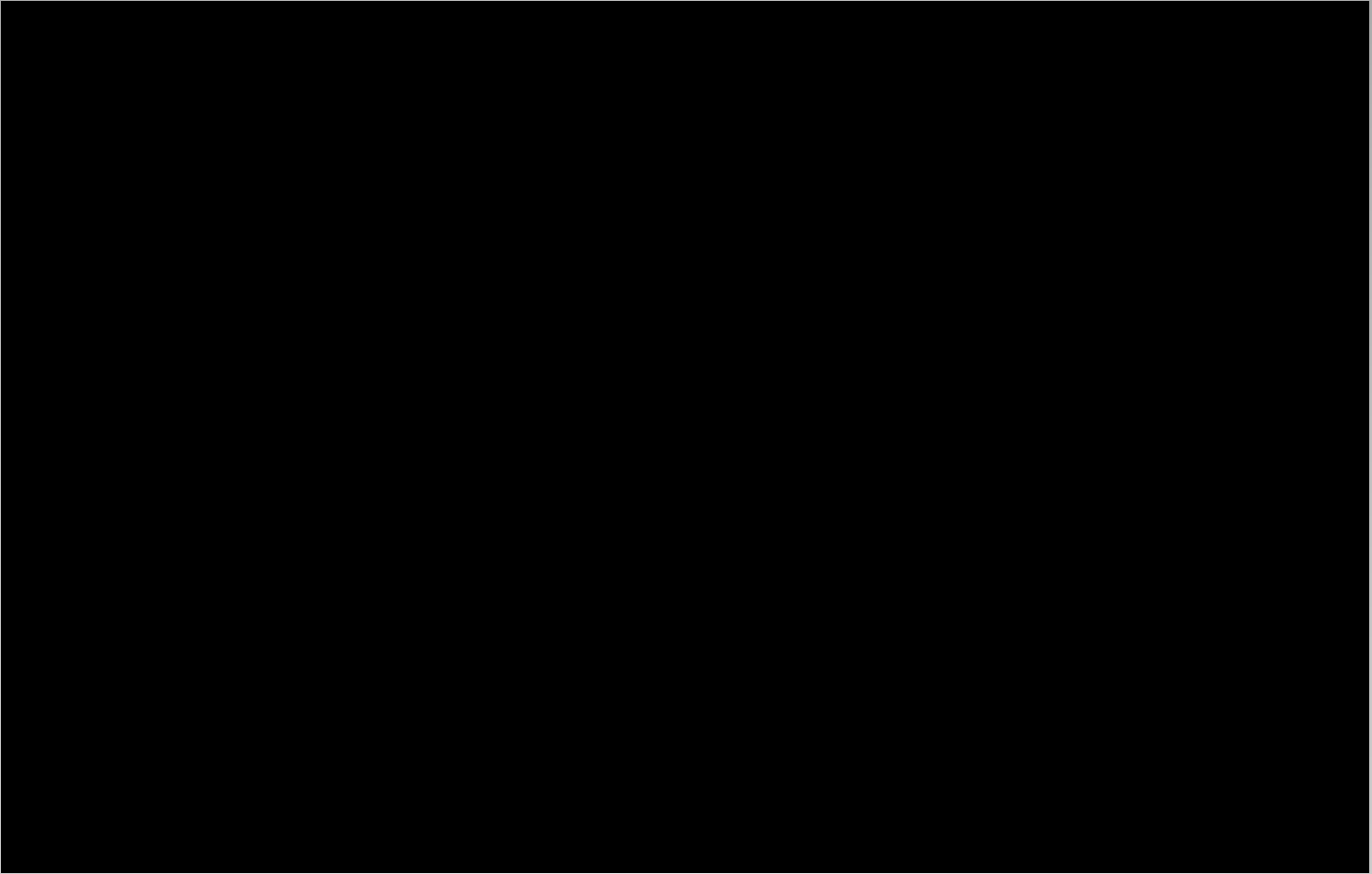
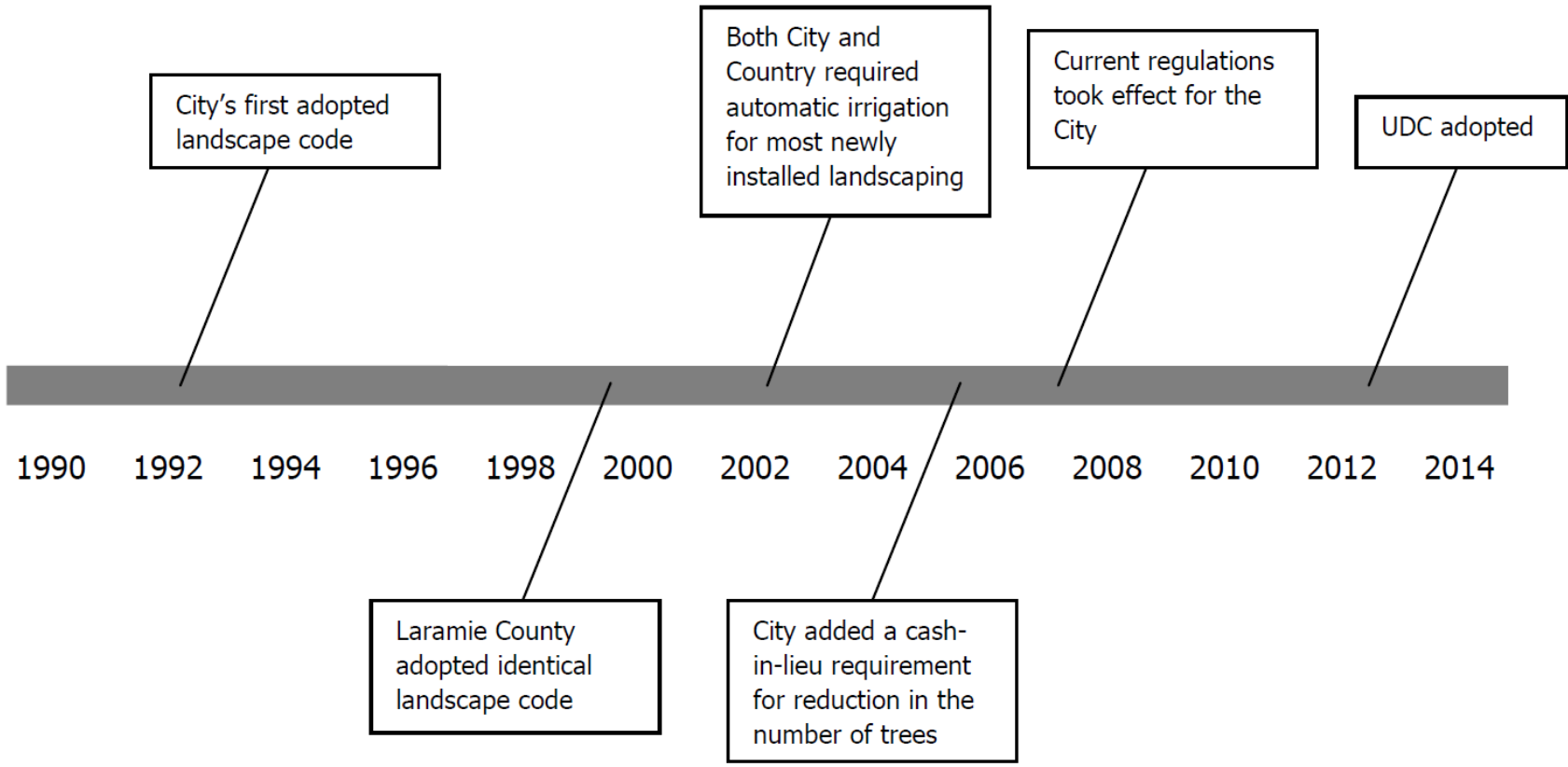


Navigating the Planning Process

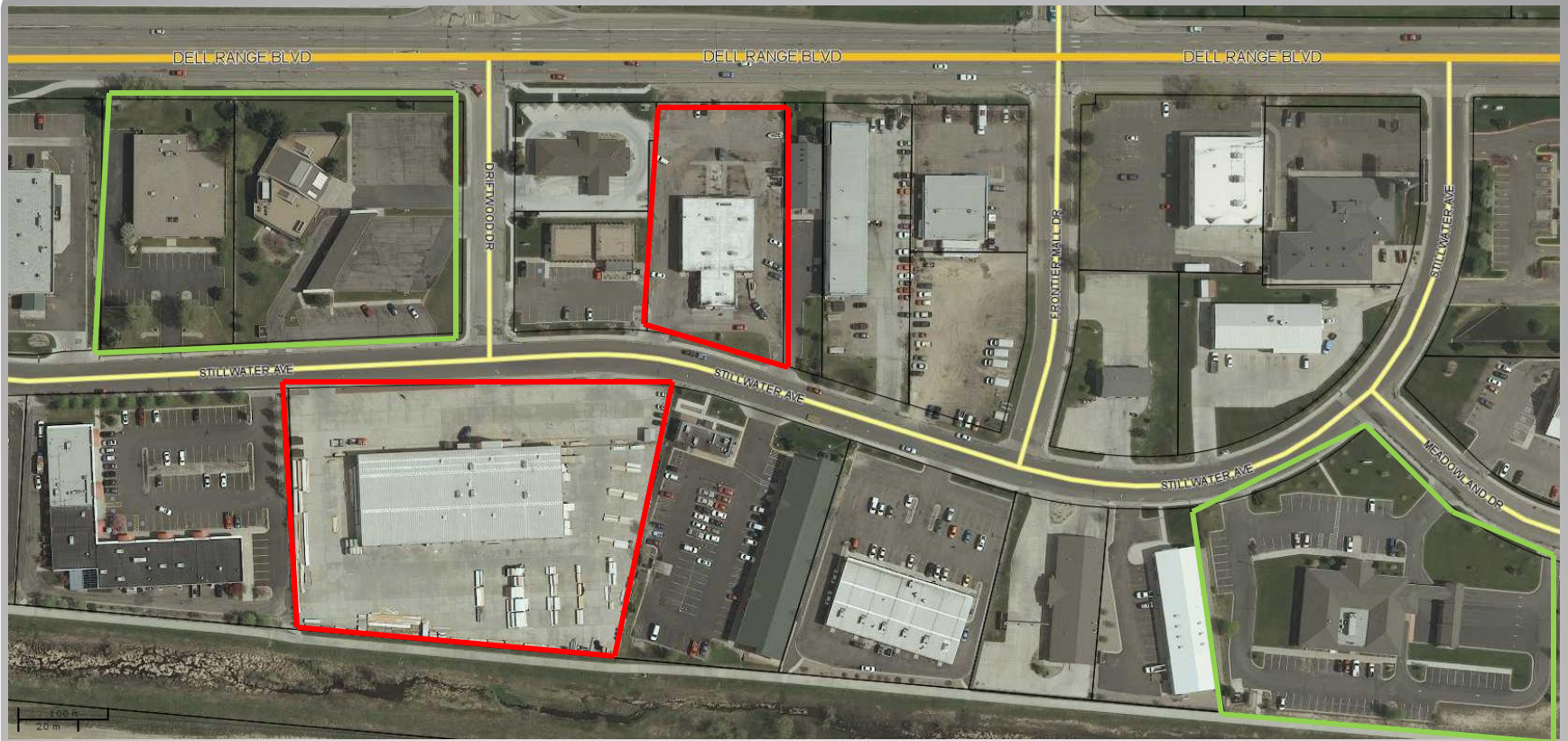
Policy to Implementation



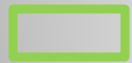
Why regulate landscapes?



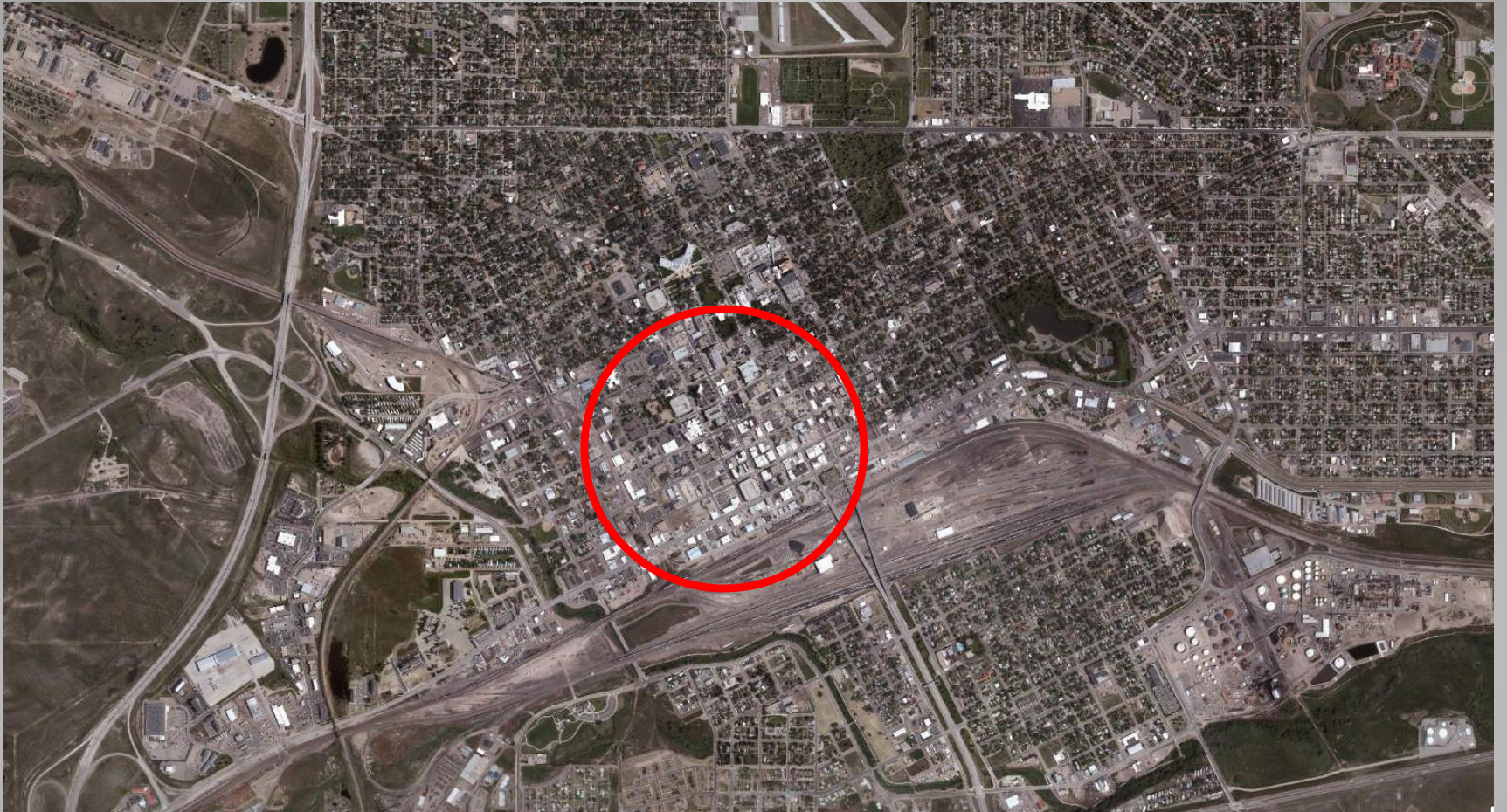
History of Landscape Code



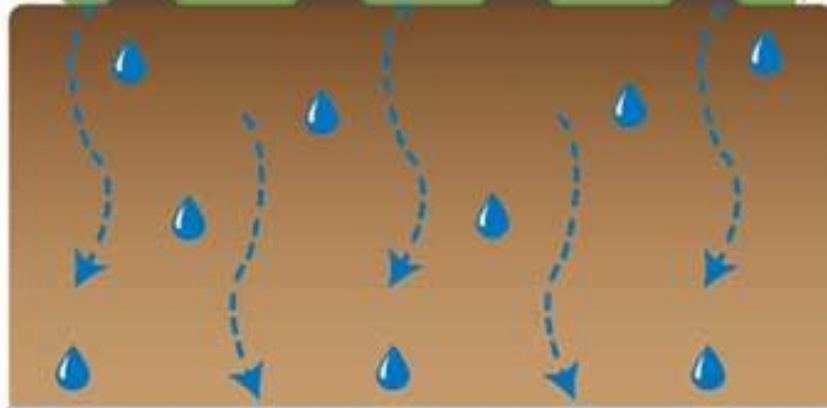
Developed prior to adoption of landscape ordinance



Developed after landscape ordinance was instituted



The landscape can be a
GREEN FILTER

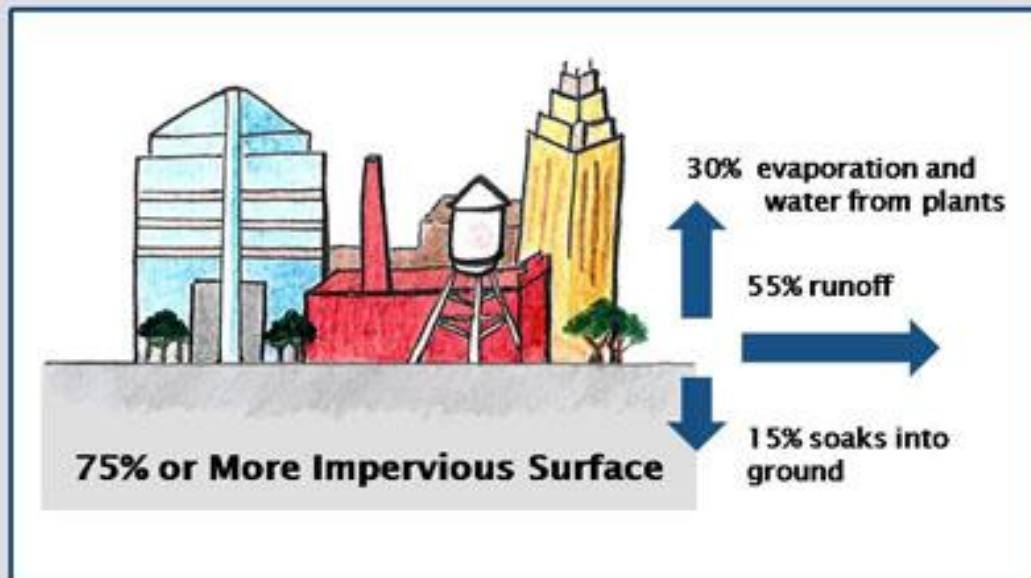
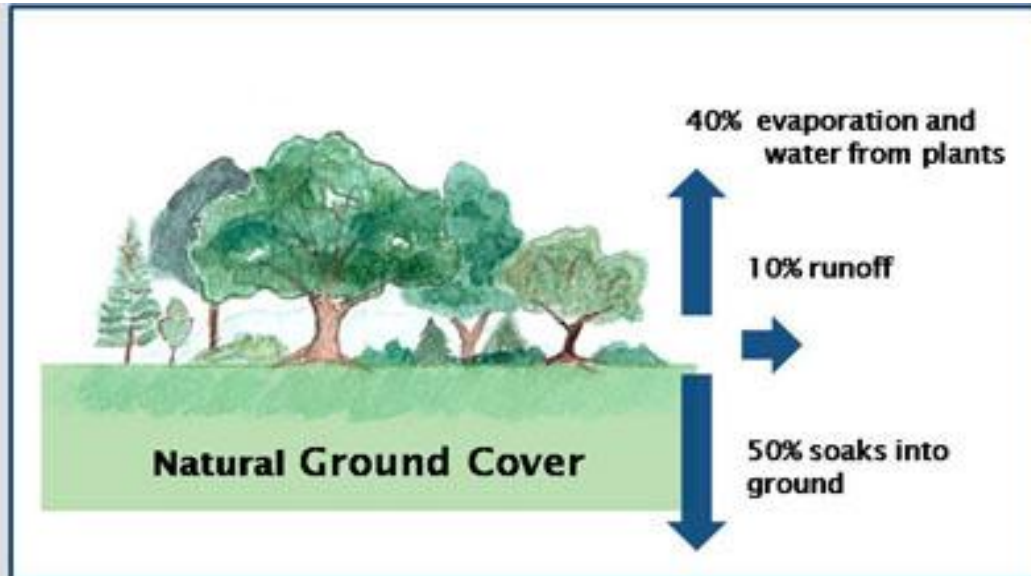


filtering pollution as the rainwater slowly sinks into the ground.

or a
GRAY FUNNEL

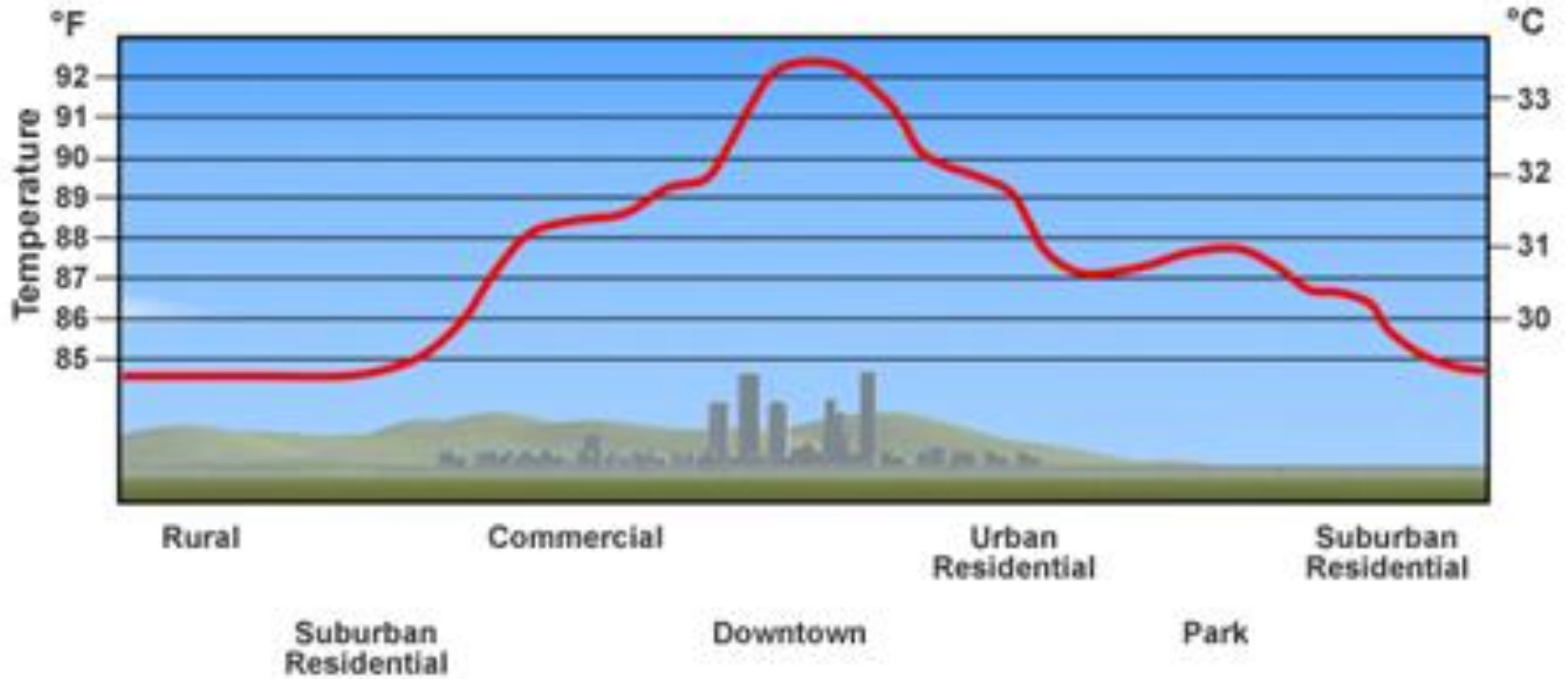


allowing pollution and toxins to be washed into our waterways.

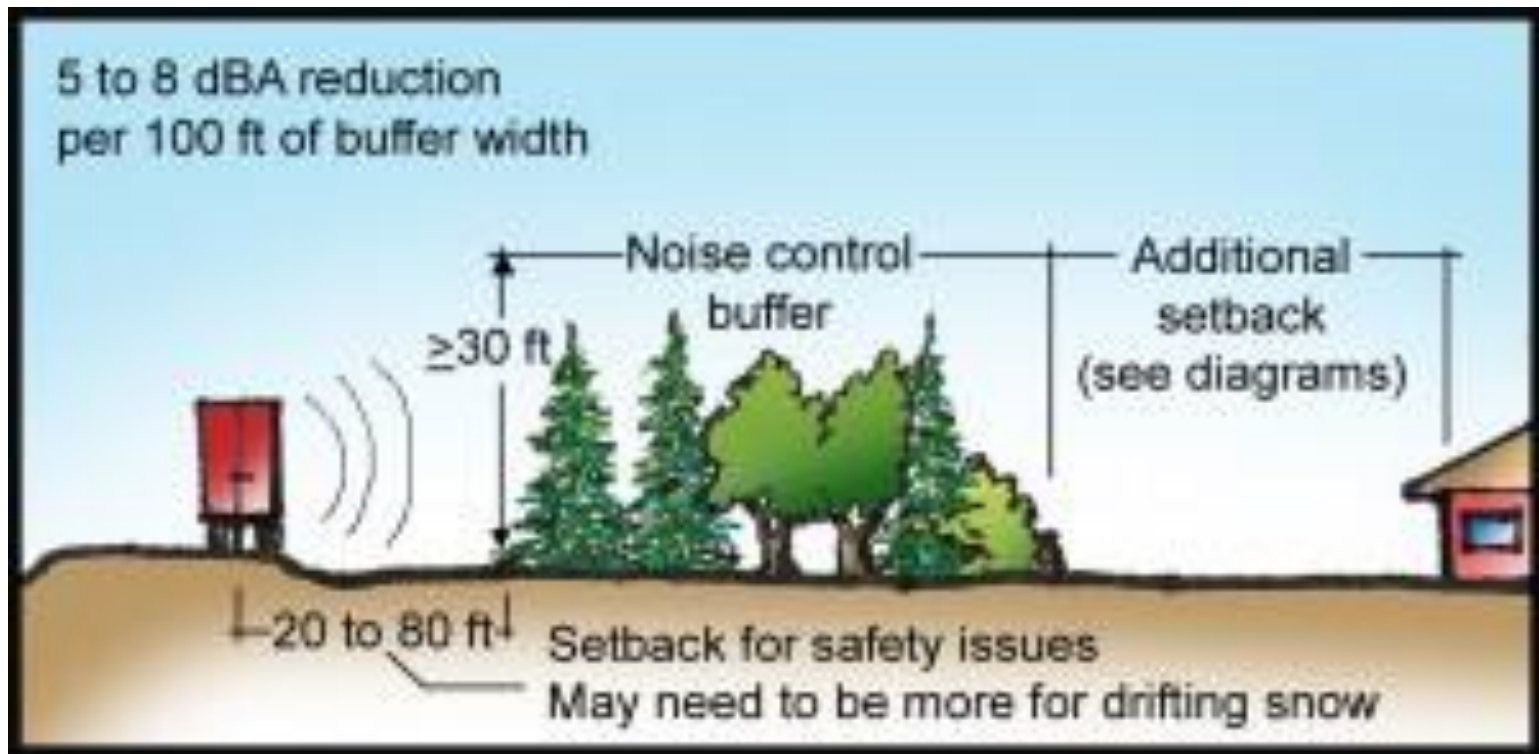




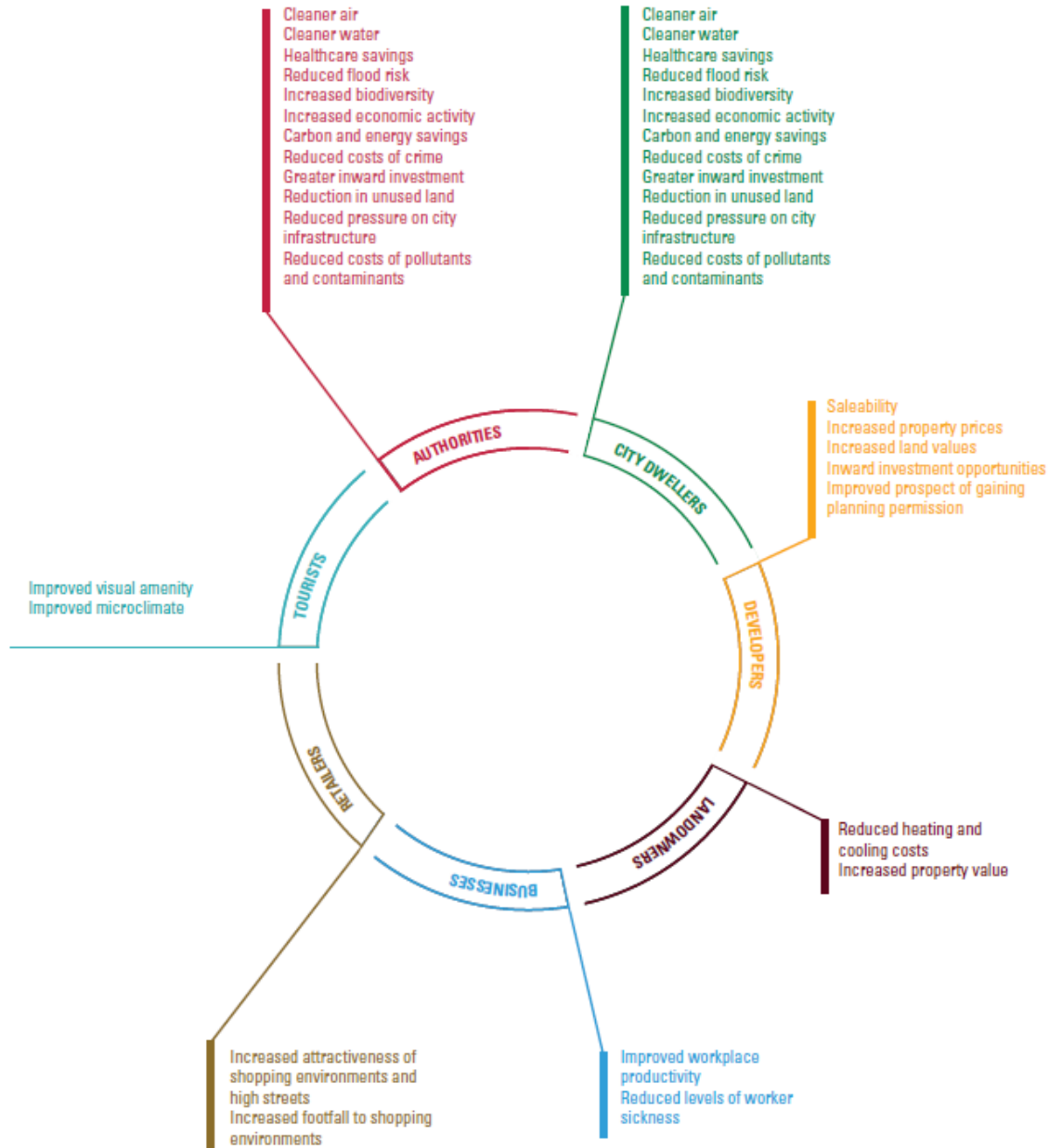
Urban Heat Island Profile



5 to 8 dBA reduction
per 100 ft of buffer width

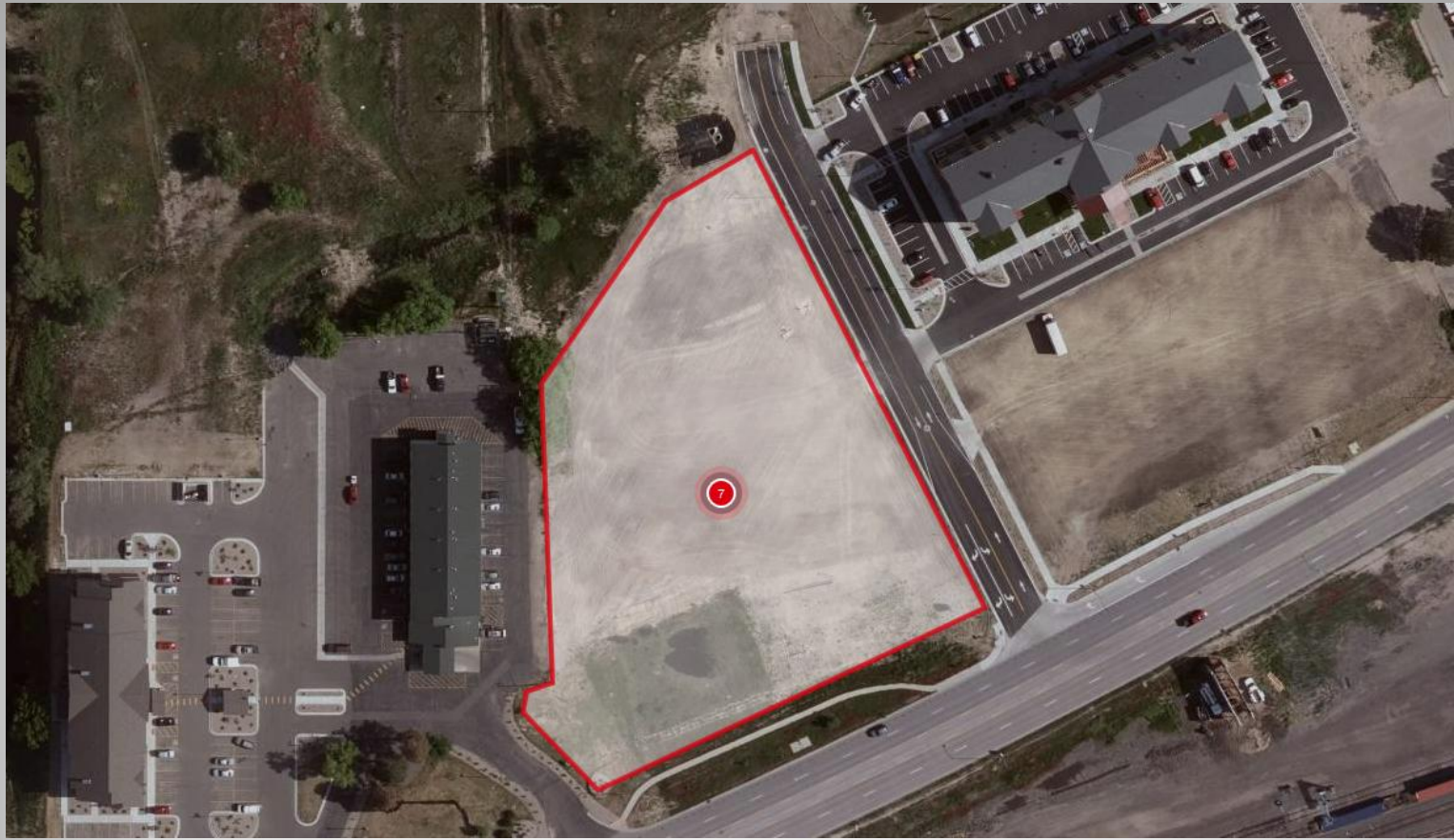






- Section 6. That the first sentence of UDC 6.3.4a is amended to read: “The sum of all Tree points, as defined in Table 6-8 below, from trees used in the landscape must exceed the required landscape area divided by **1,000.**”
- Section 7. That UDC 6.3.4b is amended to read: “The sum of all Ground Cover and Non-tree Landscape Feature points, as defined in Table 6-9 below, from ground cover and non-tree landscaping features used in the landscape must exceed the square footage of the required internal landscape area divided by **1,000.**”

2013 Landscape Reduction Proposal



New Development

Site Plan Review



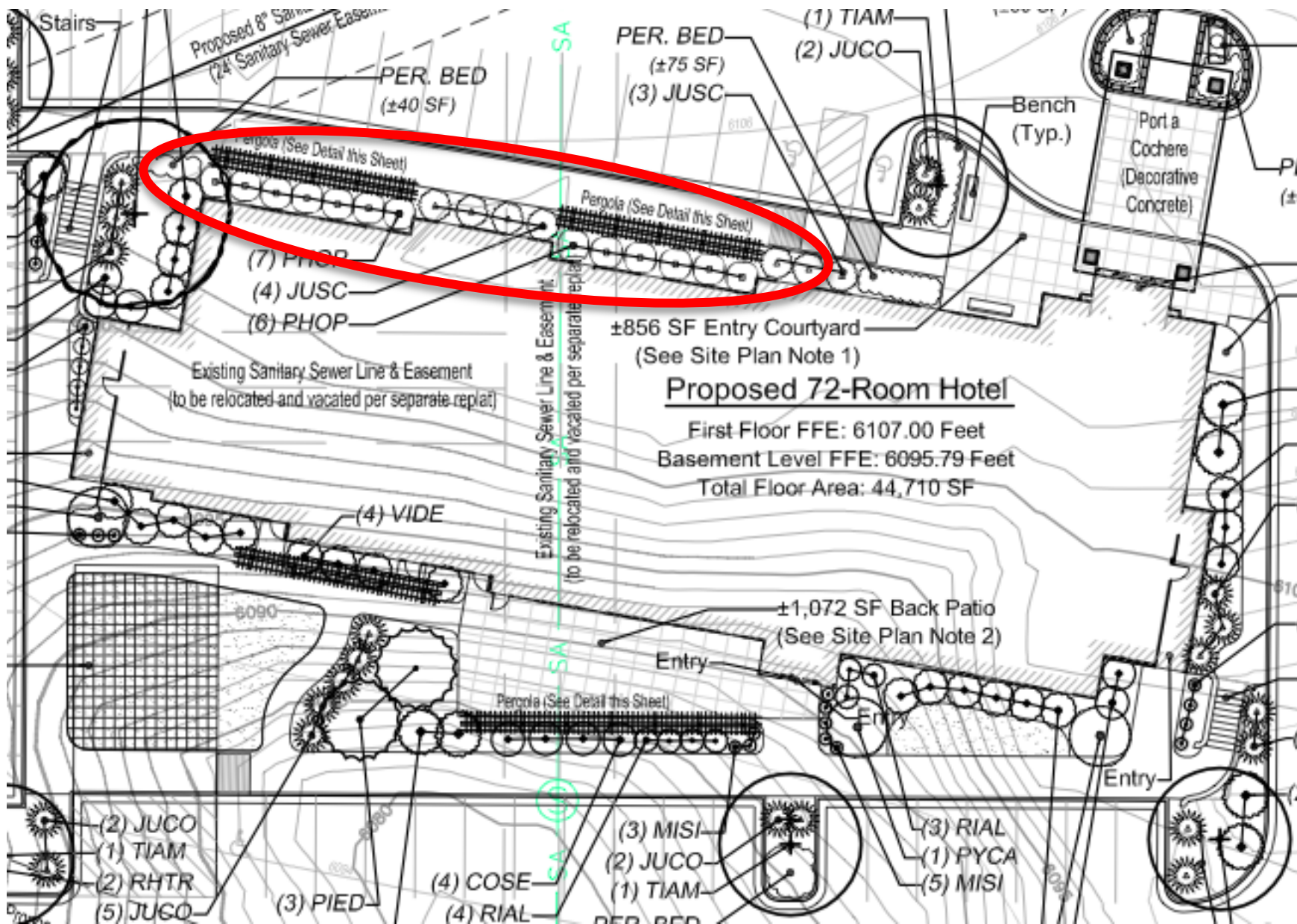
Building Additions

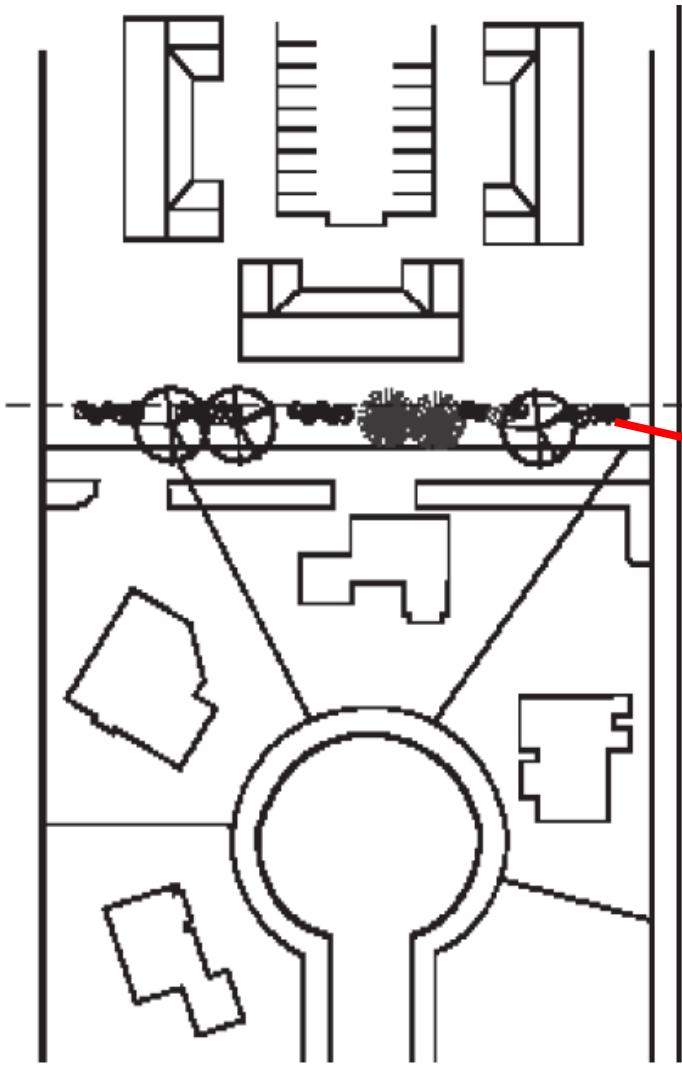
Site Plan Review



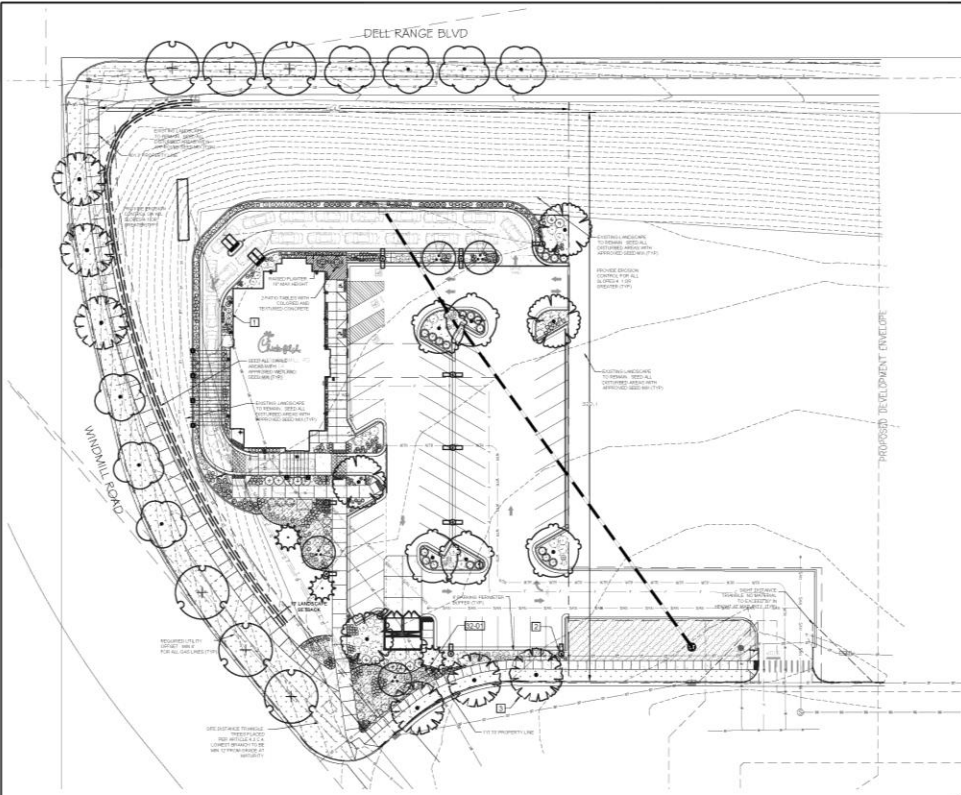








Landscape Buffers



1 LANDSCAPE PLAN
SCALE: 1" = 30'

REFERENCE NOTES SCHEDULE

SYMBOL	DESCRIPTION	QTY	DETAIL
[Symbol]	MINIMUM 3' ROOTBALL OFFSET FROM BUILDING, TYP		
[Symbol]	MINIMUM 2' OFFSET FOR PARKING OVERHANG (TYP)		
[Symbol]	ALL TREES TO BE PLANTED IN ACCORDANCE WITH CITY OF CHEYENNE LDC APPENDIXES, SPECIFICATIONS, AND REGULATIONS		
[Symbol]	TO EXERCISE IMPROVEMENTS		
[Symbol]	14.0 ROLL TOP STEEL, BOKING, STAKED 30" OC MAX.	1,183 LF	
[Symbol]	NEW GROUNDCOVERS: 30% CHRYSAEMETAL GRASSES/PERENNIALS (P-1) / MERO 2408 SF / 100 X 1 = 24.4 Pts		
[Symbol]	BOOK		
[Symbol]	GRANITE/STONE ROCK BOLLERS- DECORATIVE, 10 TON AVOID SIZE	28	

BREAKDOWN OF LANDSCAPE POINTS PROVIDED
SITE AREA = 32,815 SF
PARKING AREA = 9,275 SF
LANDSCAPE AREA REQUIRED (15%) = 9,540 SF

TREE POINTS REQUIRED = 20
NEW TREES 18" x 1.25 = 30 pts
GROUND COVER/NO-TREE POINTS REQUIRED = 20
NEW SHRUBS
SHRUBS W/ LESS THAN 1" PER WEEK WATER NEEDS = 1145.5
SHRUB Pts = 14.9 pts

NEW GROUNDCOVERS:
30% CHRYSAEMETAL GRASSES/PERENNIALS (P-1) / MERO
2408 SF / 100 X 1 = 24.4 Pts

TOTAL TREES Pts 20.00
TOTAL SHRUB Pts 14.9
TOTAL GROUND COVER Pts 24.4

*** ROLLTOPS NOT USED IN CALCULATIONS AS THEY ARE AN IMPROVEMENT CODE REQUIREMENT (15.5)

IRRIGATION SYSTEMS
ALL PLANTING SPECIFICATIONS SHALL BE PROVIDED TO ADEQUATELY IRRIGATE ALL LIVING PLANTS WITHIN ALL LANDSCAPE AREAS ACCORDING TO THE PLANT'S WATER NEEDS. ALL AUTOMATIC IRRIGATION SYSTEM DESIGN SHALL INCLUDE THE FOLLOWING:
(A) AN ELECTRIC/AUTOMATIC CONTROLLER WITH BATTERY BACKUP AND ADJUSTABLE CALENDAR CAPABILITY.
(B) EACH VALVE SHALL IRRIGATE A LANDSCAPED AREA WITH SIMILAR SITE, SOILS, SOIL CONDITIONS AND WATERING NEEDS OF PLANTS. TURF AND MAINTAINANCE AREAS SHALL BE IRRIGATED ON SEPARATE VALVES. Drip and sub-surface IRRIGATION SHALL BE ON SEPARATE VALVES.

*** THREE (3) COPIES OF AN IRRIGATION PLAN SHALL BE SUBMITTED TO THE DEVELOPMENT OFFICE PRIOR TO OBTAINANCE OF A CERTIFICATE OF OCCUPANCY.***

IRRIGATION NOTE
ALL TREES ON SITE TO BE WATERED DURING THE WINTER IN DRY PERIODS. DO NOT WATER WHEN TEMPERATURE IS LESS THAN 40 DEGREES FAHRENHEIT. WATER DEEP, SLOWLY INTO THE SOIL, AND ENHANCE PERCOLATION INTO THE SOIL TO MINIMIZE RUNOFF.

CALL UNCC
TWO WORKING DAYS
BEFORE YOU DIG
1-800-922-9857
UNCC: UTILITY AND COMMUNITY CONNECTIONS
UTILITY MARKING CENTER OF COLORADO

PLANT SCHEDULE

TREES	CODE	QTY	COMMON NAME / BOTANICAL NAME	CONTR	GAL
[Symbol]	AH	4	HOT WINGS TATARIAN MAPLE / ACER TATARICUM 'HOT WINGS'	8.8 B	1.5' GAL
[Symbol]	CO	5	COMMON HOBERRY / CELTIS OCCIDENTALIS	8.8 B	1.5' GAL
[Symbol]	GTS	4	SHADEMASTER LOCUST / GLEDITSIA TRIACANTHOS INERMIS 'SHADEMASTER' TM	8.8 B	1.5' GAL
[Symbol]	PP	3	PINON PINE / PINUS EDULIS	8.8 B	1.5' GAL
[Symbol]	QM	6	BURR OAK / QUERCUS MACROCARPA	8.8 B	1.5' GAL
[Symbol]	QML	6	CHINKAPIN OAK / QUERCUS MUEHLERBERGII	8.8 B	1.5' GAL
[Symbol]	UA	7	ACCOLADE ELM / ULMUS X 'ACCOLADE'	8.8 B	1.5' GAL

SHRUBS	CODE	QTY	COMMON NAME / BOTANICAL NAME	CONTR	GAL
[Symbol]	AL	22	LEADPLANT / AMORPHA CANESCENS	5.0 GAL	
[Symbol]	DMF	5	FERNBUSH / CHAMAEBATARIA MILLEFOLIUM 'FERNBUSH'	5.0 GAL	
[Symbol]	ES	21	DWARF BLUE RABBITEARSH / ERICAMERA NAUSEOSA SPECIOSA	5.0 GAL	
[Symbol]	RR	34	FINE LINE BUCHHORN / FRANJULA ALNUS 'FINE LINE'	5.0 GAL	
[Symbol]	JBO	20	BLUE CHIP JUNIPER / JUNIPERUS HORIZONTALIS 'BLUE CHIP'	5.0 GAL	
[Symbol]	JO	6	MOONGLOW JUNIPER / JUNIPERUS SCOPULORUM 'MOONGLOW'	15.0 GAL	
[Symbol]	MC	6	COMPACT OREGON GRAPE / MAHONIA AQUIFOLIUM 'COMPACTA'	5.0 GAL	
[Symbol]	POD	18	DWARF PURPLE HIBISCUS / PHYSOCARPUS OPALESCENS 'LITTLE DEVIL'	5.0 GAL	
[Symbol]	PSF	19	SAND CHERRY / PRUNUS BESSEYI 'PAWNEE BUTTES'	5.0 GAL	
[Symbol]	RO	22	GRO-LOW FRAGRANT SUMAC / Rhus AROMATICA 'GRO-LOW'	5.0 GAL	
[Symbol]	SM3	3	MISS KIM LILAC '68' 'M' 'A' TULA 'MISS KIM'	5.0 GAL	

GRASSES	CODE	QTY	COMMON NAME / BOTANICAL NAME	CONTR	GAL
[Symbol]	BB	77	BLUE GRAMA / BOUTELOUA GRACILIS 'BLONDE AMBITION'	1.0 GAL	
[Symbol]	PVP	86	BLUE SWITCH GRASS / PANICUM VIRGATUM 'PRAIRIE SKY'	1.0 GAL	
[Symbol]	PR	122	ROTTSTRAHLBUCH SWITH GRASS / PANICUM VIRGATUM 'ROTTSTRAHLBUCH'	1.0 GAL	
[Symbol]	BP	57	LITTLE BLUESTEM GRASS / SCHIZACHYRUM SCOPARIUM 'PRAIRIE BLUES'	1.0 GAL	
[Symbol]	BI	40	INDIAN GRASS / SORGHASTRUM NUTANS 'INDIAN STEEL'	1.0 GAL	
[Symbol]	BW	14	BIG SACATON / SPOROBOLUS WRIGHTII	1.0 GAL	

PERENNIALS	CODE	QTY	COMMON NAME / BOTANICAL NAME	CONTR	GAL
[Symbol]	ACD	41	YELLOW COLUMBINE / AQUILEGIA CHRYSANTHA 'DENVER GOLD'	1.0 GAL	
[Symbol]	ACP	20	PANCHO MANDARIN / ARCTOSTAPHYLOS X COLORADOENSIS 'PANCHO'	1.0 GAL	
[Symbol]	GO	28	ORANGES AND LEMONS BLANKET FLOWER / GALLIARIA ARISTATA 'ORANGES AND LEMONS'	1.0 GAL	
[Symbol]	MR	10	CREPINA MAHONIA / MAHONIA REPENS	1.0 GAL	
[Symbol]	PPP	92	THREADLEAF BEARDTONGUE / PENSTEMON PARVIFLORUS	1.0 GAL	

MULCHES	CODE	QTY	COMMON NAME / BOTANICAL NAME	CONTR	GAL
[Symbol]	AOO	6,518 SF	1.5" - 2" AND 3/4" MIX AGGREGATE 20 1/2" TO WASHED RIVER ROCK, 3/4" WASHED 2" LOCAL RIVER ROCK	MULCH	
[Symbol]	WM	2,007 SF	WOOD MULCH / SHREDED CEDAR MULCH	MULCH	

SEEDS	CODE	QTY	COMMON NAME / BOTANICAL NAME	CONTR	GAL
[Symbol]	LSB	2,408 SF	ADONIS VILLYS SEED MIX / LOW GROW SEED MIX 40 LB BAGS / 1000 X 1000 X 1000 MM	SEED	
[Symbol]	TURF	11,004 SF	TEXAS HYBRID BLUEGRASS / TURF TEXAS HYBRID - VERIFY PRIOR TO INSTALL	800	

Low Grow Native Seed Mix

- 85% Low Grow Mix
- (25%) Canada Bluegrass
- (25%) Sandberg Bluegrass
- (25%) Rocky Mountain Fescue
- (25%) Sheep Fescue
- Rate: 1.5 lbs/1000 sq ft (1.5)

Licensure Notes:

THIS DOCUMENT IS FOR CITY REVIEW AND APPROVAL ONLY.
THIS DOCUMENT IS NOT A CONSTRUCTION DRAWING UNLESS STAMPED BY THE LANDSCAPE ARCHITECT OF RECORD. PROJECTS REQUIRE A STAMPED SET OF CONSTRUCTION DOCUMENTS FOR LANDSCAPE IMPROVEMENT INSTALLATION.

REFERENCE ONLY - VERIFY ALL QUANTITIES AND SPECIFICATIONS SUPPLEMENTAL SCHEDULE SECTION



Chick-fil-A
5200 Buffington Rd.
Atlanta, Georgia
30348-2958

Revisions:
Mark Date By
- 05.02.14 JRO

Mark Date By
△

Seal

For and on Behalf of
Merrick & Company

MERRICK & COMPANY
1870 GREENWOOD PLAZA BLVD
GREENWOOD VILLAGE, CO
80111
303.752.0141

STORE
CHICK-FIL-A
FSU #03335
CHEYENNE

4435 WINDMILL RD
CHEYENNE, WY 82009

SHEET TITLE

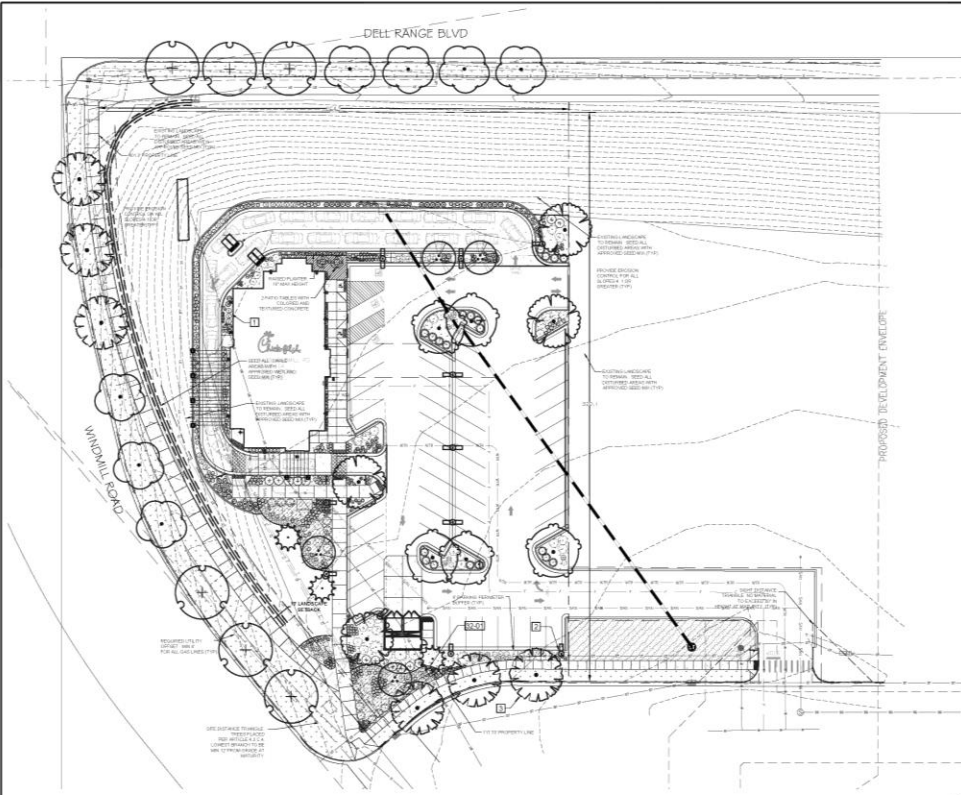
LANDSCAPE PLAN

DWG EDITION

Job No. 6518255
Store # 03335
Date 03/19/14
Drawn by: JRO
Checked By: NAM

Sheet
L-10





PLANT SCHEDULE

TREES	CODE	QTY	COMMON NAME / BOTANICAL NAME	CONT.	GAL.
	HT	4	HOT WINGS TATARIAN MAPLE / ACER TATARICUM 'HOT WINGS'	8.8 B	1.5' CAL
	CO	5	COMMON HOKBERRY / CELTIS OCCIDENTALIS	8.8 B	1.5' CAL
	ST	4	SHADEMASTER LOCUST / GLEDITSIA TRIACANTHOS INERMIS 'SHADEMASTER' TM	8.8 B	1.5' CAL
	PR	3	PRINON PINE / PINUS EDULIS	6' B&B	
	GM	6	BURR OAK / QUERCUS MACROCARPA	8.8 B	1.5' CAL
	CH	6	CHINKAPIN OAK / QUERCUS MUEHLERBERGII	8.8 B	1.5' CAL
	LA	7	ACCOLADE ELM / ULMUS X 'ACCOLADE'	8.8 B	1.5' CAL
SHRUBS	CODE	QTY	COMMON NAME / BOTANICAL NAME	CONT.	GAL.
	AL	22	LEADPLANT / AMORPHIA CANESCENS	5 GAL	
	CM	5	FERNBUSH / CHAMAEBATARIA MILLEFOLIUM 'FERNBUSH'	5 GAL	
	ES	21	DWARF BLUE RABBITEARSH / ERICAMERA NAUSEOSA SPECIOSA	5 GAL	
	FR	34	FINE LINE BUCHHORN / FRAXINUS ALNUS 'FINE LINE'	5 GAL	
	JB	20	BLUE CHIP JUNIPER / JUNIPERUS HORIZONTALIS 'BLUE CHIP'	5 GAL	
	MO	6	MOONGLOW JUNIPER / JUNIPERUS SCOPULORUM 'MOONGLOW'	15 GAL	
	MC	6	COMPACT OREGON GRAPE / MAHONIA AQUIFOLIUM 'COMPACTA'	5 GAL	
	PS	18	DWARF PURPLE NINEBARK / PHYSOCARPUS OPAULIFOLIUS 'LITTLE DEVIL'	5 GAL	
	PR	19	SAND CHERRY / PRUNUS BESSEYI 'PAWNEE BUTTES'	5 GAL	
	RO	2	GRO-LOW FRAGRANT SUMAC / RHUS AROMATICA 'GRO-LOW'	5 GAL	
	SM	3	MISS KIM LILAC / SYRINGA PATULA 'MISS KIM'	5 GAL	
GRASSES	CODE	QTY	COMMON NAME / BOTANICAL NAME	CONT.	GAL.
	BB	7	BLUE GRAMA / BOUTELOUA GRACILIS 'BLONDE AMBITION'	1 GAL	
	PR	6	BLUE SWITCH GRASS / PANICUM VIRGATUM 'PRAIRIE SKY'	1 GAL	
	PR	122	ROTTSTRAHLBUSCH SWITCH GRASS / PANICUM VIRGATUM 'ROTTSTRAHLBUSCH'	1 GAL	
	PR	57	LITTLE BLUESTEM GRASS / SCHIZACHYRIUM SCOPARIUM 'PRAIRIE BLUES'	1 GAL	
	IN	40	INDIAN GRASS / SORGHASTRUM NUTANS 'INDIAN STEEL'	1 GAL	
	BA	14	BIG SACATON / SPOROBOLUS WRIGHTII	1 GAL	
	CO	26	ORANGES AND LEMON'S BLANKET FLOWER / GALLARDA ARISTATA 'ORANGES AND LEMON'	1.0K	
	MR	10	CREPINO MAHONIA / MAHONIA REPENS	1 GAL	
	PR	82	THREADEAF BEARDTONGUE / PENSTEMON PARFLOIDES	1 GAL	
MULCHES	CODE	QTY	COMMON NAME / BOTANICAL NAME	CONT.	GAL.
	AD	8,518 SF	1/2" - 2" AND 3/4" MIX / AGGREGATE		MULCH
	WA	2,007 SF	WOOD MULCH / SHREDED CEDAR MULCH		MULCH
SEEDS	CODE	QTY	COMMON NAME / BOTANICAL NAME	CONT.	GAL.
	LS	2,408 SF	HONOLULU VALLEY TREE COLLINGS / LOW GROW SEED MIX		SEED
	TU	11,004 SF	TEXAS HYBRID BLUEGRASS / TURF		SEED

1 LANDSCAPE PLAN
SCALE: 1" = 30'

REFERENCE NOTES SCHEDULE

SYMBOL	DESCRIPTION	QTY	DETAIL
[Symbol]	MINIMUM 3' ROOTBALL OFFSET FROM BUILDING, TYP		
[Symbol]	MINIMUM 2' OFFSET FOR PARKING OVERHANG (TYP)		
[Symbol]	ALL TREES TO BE PLANTED IN ACCORDANCE WITH CITY OF CHEYENNE LDC APPENDICES, SPECIFICATIONS, AND REGULATIONS		
[Symbol]	TO EXERCISE IMPROVEMENTS		
[Symbol]	14.0 ROLL TOP STEEL BEAMS, SPACING 30" OC MAX.	1,183 LF	
[Symbol]	NEW GROUNDCOVERS: 30% ORNAMENTAL GRASSES/PERENNIALS (P-1) / MERO 2408 SF / 100 K1 = 24.4 Pts		
[Symbol]	BOOK		
[Symbol]	GRANITE/EMERALD ROCK BOLLERS - DECORATIVE, 10 TON AVOID SIZE	26	

BREAKDOWN OF LANDSCAPE POINTS PROVIDED
SITE AREA = 32,815 SF
PARKING AREA = 9,215 SF
LANDSCAPE AREA REQUIRED (15%) = 9,540 SF

TREE POINTS REQUIRED = 20
NEW TREES 14 x 1.25 = 17.5 Pts
GROUND COVER/ORNAMENTAL TREE POINTS REQUIRED = 20
NEW SHRUBS
SHRUBS W/ LESS THAN 11" PER WEEK WATER NEEDS = 1145.5
SHRUB Pts = 14.8 Pts

NEW GROUNDCOVERS:
30% ORNAMENTAL GRASSES/PERENNIALS (P-1) / MERO
2408 SF / 100 K1 = 24.4 Pts

TOTAL TREES Pts 20.00
TOTAL SHRUB Pts 14.8
TOTAL GROUND COVER Pts 24.4

*** ROLLTOPS NOT USED IN CALCULATIONS AS THEY ARE AN IMPROVEMENT CODE REQUIREMENT (15.6)

IRRIGATION SYSTEMS
ALL IRRIGATION SYSTEMS SHALL BE PROVIDED TO ADEQUATELY IRRIGATE ALL LIVING PLANTS WITHIN ALL LANDSCAPE AREAS ACCORDING TO THE PLANT'S WATER NEEDS.
ALL IRRIGATION IRRIGATION SYSTEM DESIGN SHALL INCLUDE THE FOLLOWING:
(A) AN ELECTRIC/AUTOMATIC CONTROLLER WITH BATTERY BACKUP AND ADJUSTABLE CALENDAR CAPABILITY.
(B) EACH VALVE SHALL IRRIGATE A LANDSCAPED AREA WITH SIMILAR SITE, SOILS, SOIL CONDITIONS AND WATERING NEEDS OF PLANTS. TURF AND MAINTAIN AREAS SHALL BE IRRIGATED ON SEPARATE VALVES, Drip AND MICROSPRINK IRRIGATION SHALL BE ON SEPARATE VALVES.
*** THREE (3) COPIES OF AN IRRIGATION PLAN SHALL BE SUBMITTED TO THE DEVELOPMENT OFFICE PRIOR TO OBTAINANCE OF A CERTIFICATE OF OCCUPANCY.***

IRRIGATION NOTE
ALL TREES ON SITE TO BE WATERED DURING THE WINTER IN DRY PERIODS. DO NOT WATER WHEN TEMPERATURE IS LESS THAN 40 DEGREES FAHRENHEIT. WATER DEEP, SLOWLY INTO THE SOIL, AND ENHANCE PERCOLATION INTO THE SOIL TO MINIMIZE RUNOFF.

GENERAL PLANTING SPECIFICATIONS (SEE 15.2):
1. PLANT SPECIFICATIONS SHOULD BE THOSE KNOWN TO BE ABLE TO SURVIVE IN CHEYENNE AND WYOMING CLIMATE. QUALITY AND SOURCE SHALL BE VERIFIED BY THE CITY ENGINEER.
2. LANDSCAPING SHALL BE PERFORMED ACCORDING TO SOUND AGRICULTURAL PRACTICES IN A MANNER DESIGNED TO ENCOURAGE CALIFORNIA SUSTAINABLE GROWTH.
3. TREE QUANTITY SHALL MEET THE MOST CURRENT AVAILABLE WATER REQUIREMENT FOR NUMBER SPECIES (SEE 15.2.1) PER SPECIES.
4. PLANT SPACING SHOULD ALLOW FOR THE GROWTH SPACING SPECIFIED OF THE TREES WHEN APPLIED TO THE SPECIFIED MAINTENANCE SIZE OF TREES OR THE FUNCTION OF MAINTENANCE OF SPECIFIED MAINTENANCE SIZE OF TREES.
5. TREE SPECIES SELECTION SHOULD REFLECT SPECIES WETLANDS/BIOMES IN THE NEIGHBORHOOD.
6. SOIL IMPROVEMENT IS REQUIRED IN ALL SOILS UPON WHICH PLANTS TO BE PLANTED. THE TOP SIX INCHES OF SOIL SHALL BE ENRICHED WITH ORGANIC MATTER PRIOR TO PLANTING. PLANTS SHALL BE PLANTED IN ACCORDANCE WITH THE CITY ENGINEER'S PLANTING SPECIFICATIONS (SEE 15.2.1) PER SPECIES.
7. LANDSCAPING SHALL NOT CONFLICT WITH TRAFFIC VISIBILITY REQUIREMENTS IN ARTICLE 4 OF THE TITLE.
8. GUARDRAILS, UNDERPASS, SHALL BE CREDITED AS ONLY ONE OF THE REQUIRED TREES.
9. LANDSCAPING SHOULD NOT INTERFERE WITH THE GENERAL FUNCTION AND SAFETY OF ANY AND ALL CITY UNDERPASS, BRIDGE, OR OTHER CITY FACILITY. LANDSCAPING SHALL BE LIMITED TO AN EIGHT-FOOT MAXIMUM HEIGHT WITHIN 5' OF A PAVEMENT.
10. HEALTHY GROWING INDIGENOUS VEGETATION ON A SITE MAY BE CREDITED TOWARDS REQUIRED LANDSCAPING IN THIS ARTICLE.
11. UNLESS OTHERWISE SPECIFIED, LANDSCAPING REQUIREMENTS SHALL BE THOSE OF THE CODE. THE USUALLY REQUIREMENT SHALL BE MET.

ALL NATIVE AND RESIDENT SPECIES IDENTIFIED FOR PLANTING SHALL BE PROVIDED BY LANDSCAPE ARCHITECT OF RECORD. TREES TO BE INSTALLED.

Low Grow Native Seed Mix
PSS Low Grow Mix
(25%) Canada Bluegrass
(25%) Sandberg Bluegrass
(25%) Rocky Mountain Fescue
(25%) Sheep Fescue
Rate: 1.00 TON / 100 SF

Licensure Notes:
THIS DOCUMENT IS FOR CITY REVIEW AND APPROVAL ONLY.
THIS DOCUMENT IS NOT A CONSTRUCTION DRAWING UNLESS STAMPED BY THE LANDSCAPE ARCHITECT OF RECORD. PROJECTS REQUIRE A STAMPED SET OF CONSTRUCTION DOCUMENTS FOR LANDSCAPE IMPROVEMENT INSTALLATION.

FOR REFERENCE ONLY. VERIFY ALL QUANTITIES FROM DRAWING SUPERSEDES ALL SCHEDULE INFORMATION.



Chick-fil-A
5200 Buffington Rd.
Atlanta, Georgia
30348-2998

Revisions:
Mark Date By
- 05.02.14 JRO

Mark Date By

Seal

For and on Behalf of
Merrick & Company



STORE
CHICK-FIL-A
FSU #03335
CHEYENNE

4435 WINDMILL RD
CHEYENNE, WY 82009

SHEET TITLE

LANDSCAPE PLAN

DWG EDITION

Job No. - 65118255
Store - 03335
Date - 03/19/14
Drawn By - JRO
Checked By - NAM

Sheet

L-10



GENERAL NOTES

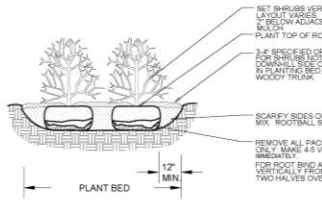
(Note: All references to "Contractor" are specific to "Landscape Contractor" unless noted as "General or other type Contractor")

- CONTRACTOR IS RESPONSIBLE FOR VERIFYING QUANTITIES OF MATERIALS NEEDED TO COMPLETE THIS PLAN IN THE FIELD. NOTIFY LANDSCAPE ARCHITECT OF ANY DISCREPANCIES IN THE DRAWINGS AND CONDITIONS IN THE FIELD. SUBSTITUTIONS OF PLANT MATERIAL ARE NOT ALLOWED WITHOUT APPROVAL FROM THE DRAWING ARCHITECT PRIOR TO INSTALLATION. GRAPHIC CITY'S PREVAL OVER WRITTEN CITY'S PRIOR TO COMMENCEMENT OF WORK. THE LANDSCAPE CONTRACTOR SHOULD CONTACT OWNERS REPRESENTATIVE FOR SPECIFIC INSTRUCTIONS RELEVANT TO THE SEQUENCING AND SCOPE OF WORK.
- CONTRACTOR IS RESPONSIBLE FOR INSTALLING ALL LANDSCAPE SHOWN ON THIS PLAN. ANY CHANGES OR DEVIATIONS FROM THIS PLAN ARE TO BE APPROVED BY OWNERS REPRESENTATIVE OR LANDSCAPE ARCHITECT. ANY CHANGES FROM THE APPROVED PLANS MAY REQUIRE APPROVAL FROM THE CITY OR COUNTY PLANNING DEPARTMENTS.
- LANDSCAPE CONTRACTOR TO PROVIDE ALL LABOR AND MATERIALS NECESSARY TO FURNISH SCOPE OF WORK AS SHOWN PER PLAN.
- EXISTING TOPSOIL IS TO BE STOCKPILED AND USED TO ESTABLISH FINAL GRADES WITHIN LANDSCAPE AREAS. ALL STOCKPILED SOIL MUST BE CLEAR OF WEEDS, ROCKS AND DEBRIS BEFORE REUSE. ALL BEHIND PLANTING BEDS TO BE CREATED WITH IMPORTED TOPSOIL.
- GENERAL CONTRACTOR TO BE SPREAD STOCKPILED SOIL AND ESTABLISH ROUGH GRAD CONDITIONS TO THE FOLLOWING SPECIFICATIONS:
 - A. 1" BELOW CURB FOR ALL SEEDS AREAS
 - B. 2" BELOW CURB FOR ALL SEEDS AREAS
 - C. 2" BELOW CURB FOR ALL PLANTING, ROCK AND MULCH BEDS.
- CONTRACTOR TO FILL PARKING LOT ISLANDS TO A DEPTH OF 30".
- AMEND ALL PLANTING BEDS WITH CLASS 1 COMPOST. APPLY AT RATE OF 3 CYCLES PER 1000 SQUARE FEET TO ALL PLANTING BEDS AND MANICURED LAWN AREAS, AND 2 CYCLES PER 1000 SQUARE FEET FOR SEEDS AREAS. TILL MIXING THOROUGHLY INTO THE UPPER 6" OF SOIL.
- FINE GRADE IS TO BE ESTABLISHED BY LANDSCAPE CONTRACTOR. FINE GRADE SHALL BE FREE OF ROCKS AND DEBRIS. FINE GRADE IN SEED AREAS SHALL BE FREE FROM ROCKS AND DEBRIS 1/2" AND GREATER. FINE GRADE IN SEED AREAS SHALL BE FREE FROM ROCKS AND DEBRIS 1/2" AND GREATER. CONTRACTOR TO REPORT ANY POOR DRAINAGE CONDITIONS PRIOR TO CONSTRUCTION.
- CONTRACTOR IS TO PROVIDE VERIFICATION THAT ALL SOIL IS OF THE SPECIES SHOWN ON THIS PLAN. NO SUBSTITUTIONS WILL BE ALLOWED. SOIL TO BE AND WITH TOP SOIL ENHANCED EDGES AND ROLLED AFTER INSTALLATION. SEEDS AREAS MUST BE SUBSTITUTED WITH SOIL.
- MULCHES: ALL PLANTING BEDS THAT CALL FOR WOOD/Organic MULCH TO RECEIVE 4" ORGANIC SHREDED BARK MULCH. SHREDED MULCH IS TO BE OF FIBROUS MATERIAL, NOT CHIPS OR DRUMS. NO FABRIC IS TO BE PLACED UNDER WOOD/Organic MULCH. TREES IN TURF AND NATIVE GRASS AREAS TO RECEIVE 4" DIAMETER OF WOOD MULCH 3" DEPTH. ALL MULCHED BEDS ARE TO BE SPRAYED WITH WATER AFTER INSTALLATION TO HELP MULCH TO MAT DOWN.

USE PERMEABLE FABRIC UNDERLAYMENT FOR ALL COBBLER/AGGREGATE AREAS WITH SLOPES 3:1 AND LESS. USE QUICK RELEASE ORGANIC PRE-EMERGENT HERBICIDE FOR ALL MULCHED AND PERENNIAL PLANTING BEDS AND FOR COBBLER/AGGREGATE AREAS WITH SLOPES EXCEEDING 3:1 GRADE.

SHRUBS AND GROUNDCOVERS IN NATIVE GRASS AREAS TO RECEIVE 3" DIAMETER OF WOOD MULCH 3" DEEP.
TREES IN COBBLER/ROCK MULCH TO RECEIVE 4" DIAMETER OF WOOD MULCH 3" DEEP.
SHRUBS AND GROUNDCOVERS IN COBBLER/ROCK MULCH AREAS TO RECEIVE 3" DIAMETER OF WOOD MULCH 3" DEEP. NO FABRIC UNDERLAYMENT IN WOOD MULCH AREAS.

- NOTES**
- PRUNE ONLY DEAD OR BROKEN BRANCHES AND WEAK OR NARROW CROTCHES.
 - KEEP PLANTS MOIST AND SHADED UNTIL PLANTING.
 - DO NOT FERTILIZE FOR AT LEAST ONE GROWING SEASON.
 - AMENDED BACKFILL SHALL BE 15% COMPOST (PREFERABLY CLASSIFIED) AND 20% NATIVE AND/OR IMPORTED TOPSOIL.
 - ALL SHRUBS IN ROCK AREAS TO RECEIVE SHREDED MULCH RINGS.
 - DEEP WATER ALL PLANTS AT TIME OF PLANTING.



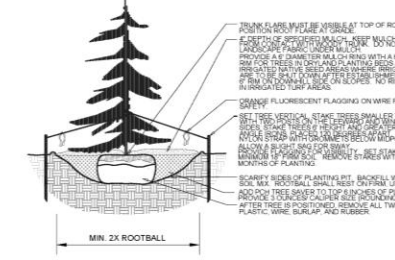
SHRUB PLANTING DETAIL
NOT TO SCALE SECTION

CALL UNCC
TWO WORKING DAYS
BEFORE YOU DIG
1-800-922-1987
MULCH APPROVED SOURCE OF COLORADO

- SEED MIX INSTALLATION: CONTRACTOR TO DRILL SEED WITH BRILLIANT TYPE APPLICATOR AND APPLY SOIL GUARD BONDED FIBER MATRIX (FIBM), WHERE INDICATED PER PLAN AND SCHEDULES. APPLY SEEDS IN TWO DIRECTIONS (PERPENDICULAR OF THE OTHER). ADD SOIL GUARD (IF NOT DRILL SEEDING WHERE NOTED PER PLAN AND ON ALL SLOPES 3:1 TO 1:1. FOR AREAS WITH 3:1 SLOPES OR GREATER CONTRACTOR TO USE SOIL GUARD APPLICATION ONLY IN LEAS OF HYPOXIMALPHO). CONTRACTOR TO SPOT SEED NON-SEEDING AREAS 15 MONTHS AFTER INITIAL SEED APPLICATION. CONTRACTOR TO RE-SEED ALL BARE AREAS (10% AND GREATER) AFTER 18 MONTHS FROM SEED GERMINATION OR AT THE BEGINNING OF THE FOLLOWING GROWING SEASON. PRIOR TO THE 18 MONTH WARRANTY INSPECTION RE-APPLY SOIL GUARD AND SEED MIX TO ALL BARE AREAS (10% OR GREATER) AND TO ALL BARE AREAS (4% OR GREATER) ON ALL SLOPES 3:1 AND GREATER.
- REMOVED DEAD TWIGS AND BRANCHES FROM ALL NEW AND EXISTING PLANT MATERIAL. IN A MANNER THAT DOES NOT CHANGE THE NATURAL HABIT OF THE PLANT MATERIAL. SCARS OF 1" OR MORE SHALL NOT BE FACED WITH ORGANIC TREE PAINT. CENTRAL LEADERS SHALL NOT BE REMOVED AT ANY TIME. NEWLY PLANTED TREES WITHOUT CENTRAL LEADERS WILL BE SELECTED.
- CONTRACTOR TO APPLY FERTILIZER IN SPRING & LATE SEPTEMBER WATER THOROUGHLY AFTER APPLICATION OF FERTILIZERS.
- ALL SEEDS AND SOOED AREAS TO HAVE RECEIVED FERTILIZER APPLICATIONS ACCORDING TO 3 REASONS AFTER SEEDING EMERGENCE, AND ONCE IN MID TO LATE JUNE, EARLY TO MID AUGUST, AND ONCE IN LATE SEPTEMBER. SEEDS AND SOOED AREAS ALSO TO RECEIVE 5 LBS OF ELEMENTAL SULFUR OR EQUIVALENT MATERIAL PER 1000 SF APPLIED IN LATE SEPTEMBER. WATER THOROUGHLY AFTER APPLICATION OF FERTILIZERS.
- ALL PLANT MATERIALS AND UTILITIES ARE SHOWN AT AN APPROXIMATE LOCATION. THE CONTRACTOR MAY NEED TO ADJUST LOCATIONS OF PLANT MATERIAL TO ACHIEVE TO SPECIFIC ON-SITE CONDITIONS AND CODE REQUIREMENTS. ALL TREES AND SHRUBS TO BE PLACED AT A MINIMUM BACK OF CURB. CONTRACTOR TO CALL FOR UTILITY LOCATES BEFORE PLANTING (TYP) 1-800-922-1987 OR CALL 811 BEFORE YOU DIG.
- STEEL EDGING TO BE USED TO SEPARATE ALL TURF AND NEEDED AREAS FROM PLANTING BEDS. USE PERFORATED EDGING BORDERS TO DESIGNATE POSITIVE DRAINAGE FOR ALL DRAINAGE SWALES OR AREAS OF STANDING WATER.
- CONTRACTOR TO PROVIDE COBBLE & UNDERLAYMENT FOR BUILDING DRAINS AND SWALES THROUGH LANDSCAPED AREAS.
- ALL REQUIRED LANDSCAPING TO BE INSTALLED PRIOR TO ISSUANCE OF THE CERTIFICATE OF OCCUPANCY.
- NEW PLANT MATERIAL MUST COMPLY WITH CURRENT COLORADO NURSERY ACT STANDARDS.

NOTES

- DO NOT REMOVE OR CUT LEADER.
- PRUNE ONLY DEAD OR BROKEN BRANCHES IMMEDIATELY PRIOR TO PLANTING.
- DO NOT REMOVE ANY DOUBLE LEADER UNLESS OTHERWISE DIRECTED BY OWNERS REPRESENTATIVE.
- KEEP PLANTS MOIST AND SHADED UNTIL PLANTING.
- AMENDED BACKFILL SHALL BE 15% COMPOST (PREFERABLY CLASSIFIED) AND 20% NATIVE AND/OR IMPORTED TOPSOIL.
- MARK THE NORTH SIDE OF TREE IN THE NURSERY AND ROTATE TREE TO FACE NORTH AT THE SITE WHENEVER POSSIBLE.
- PRUNE AND SPRUCE TREES TO BE SPRAYED FOR PINE BARK BEETLE PRIOR TO PLANTING. COORDINATE WITH CITY FORESTRY FOR CURRENT INSECT AND DISEASE RECOMMENDATIONS PRIOR TO PLANTING.
- ALL TREES TO BE DEEP WATERED AT TIME OF PLANTING.



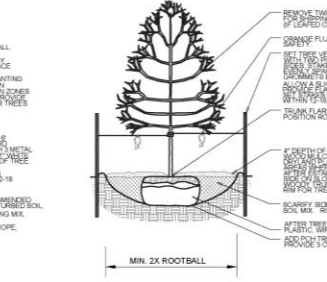
EVERGREEN TREE PLANTING DETAIL
NOT TO SCALE SECTION

- CONTRACTOR IS RESPONSIBLE FOR CONTACTING LANDSCAPE ARCHITECT FOR ALL REQUIRED INSPECTIONS. PROVIDE AT LEAST 48 HOURS NOTICE TO SCHEDULE AN INSPECTION. REQUIRED INSPECTIONS INCLUDE A LANDSCAPE LAYOUT AND PLANT MATERIAL VERIFICATION AND PLACEMENT INSPECTION, IRRIGATION MAIN LINE INSPECTION, LANDSCAPE AND IRRIGATION FINAL INSPECTION.
- CONTRACTOR IS TO PROVIDE ONE YEAR WARRANTY ON ALL PLANT MATERIAL, TURF, IRRIGATION COMPONENTS AND WORKMANSHIP. REDUCED PLANT MATERIALS SHALL BE OF THE SAME SPECIES AND SIZE AS THE SPECIFIED OR DEAD PLANT MATERIAL. WARRANTY IS VOID IF PLANT MATERIAL ARE UNDER OR OVER MATTER FERTILIZED, DAMAGED BY VANDALISM OR NEGLECTED BY OWNER AFTER FINAL MAINTENANCE CHECK AND FINAL ACCEPTANCE IS PROVIDED.
- REMOVE ALL TREE STAKING MATERIALS AT END OF WARRANTY. PRIOR TO FINAL ACCEPTANCE.
- MAINTENANCE: THE OWNER OF THIS PROPERTY AND ANY FUTURE OWNERS SHALL BE RESPONSIBLE FOR THE PROPER LANDSCAPE AND IRRIGATION MAINTENANCE OF THIS SITE AND ANY RIGHT OF WAY AREAS BETWEEN THE CURB AND PROPERTY LINES OF THIS SITE. MAINTENANCE OF THIS SITE INCLUDES, BUT IS NOT LIMITED TO, IRRIGATION INSPECTIONS AND ADJUSTMENTS, IRRIGATION SYSTEM SHUT DOWN AND START UP, IRRIGATION LEAK REPAIR, LANDSCAPE WEEDING, MOWING, SEEDING, FERTILIZATION, WOOD MULCH AND ROCK COVER REPLACEMENT, PRUNING, AND PLANT MATERIAL REPLACEMENT (INCLUDING ANNUAL BEES). ALL MAINTENANCE SHOULD BE IN ACCORDANCE WITH STANDARDS SPECIFIED WITHIN THE ALCO SPECIFICATIONS HANDBOOK, REVISED EDITION, 1996. OWNER SHOULD CONTACT LANDSCAPE CONTRACTOR OR LANDSCAPE ARCHITECT REGARDING ANY QUESTIONS RELATING TO THE LANDSCAPE OR IRRIGATION MAINTENANCE OF THIS SITE.

- To assist in preventing dangerous or hazardous conditions, during emergency situations involving the need for immediate cutting, pruning, removal or other structural alterations of trees, the director of forestry, or designee, may issue a permit without prior written application being submitted, and may waive permit fees.
 - For emergency situations, persons conducting tree work within the public rights-of-way or upon public property must immediately report, but not later than the next business day, the action taken to the office of the director of forestry. Tree work will be inspected and formally documented by the director of forestry, or designee.
- 12.16.40. Responsibility of property owners.
 - It is the duty of the owner of property abutting any public street, alley or sidewalk rights-of-way, or other public place, to properly maintain and care for all trees, shrubs, hedges or vines located upon or affecting these areas. The director of forestry shall have the authority to require such property owners to provide proper maintenance, which includes, but is not limited to, providing a fourteen (14) foot clearance above street and alley surfaces and an eight foot clearance above sidewalk.
 - Property owners will be provided with written notice by the office of the director of forestry, advising of any maintenance work to be performed and a time frame in which the work is to be completed.
 - An owner of property abutting the public street, alley, or sidewalk rights-of-way, or other public place, is not responsible for the trimming of any tree, shrubs, hedges or vines necessary to provide clear visibility of traffic-control devices or other traffic controlling facility. It is the duty of the director of forestry to provide for any trimming work necessary for these situations.

- 12.16.10. Transportation requirements.
 - Traffic Visibility Across Corner Lots: A triangle space shall be provided across corner lots for adequate sight visibility. If the City Engineer or County Engineer finds that there are unusual circumstances, the requirements of this section may be altered. The City Engineer or County Engineer may approve the location of light or sign poles 12 inches or less in diameter in the triangle if visibility is not impeded.
 - This space is to be kept free from all obstructions to vision between the heights of 2 and 12 feet above the street grades. The responsibility lies on the landowner to maintain this visibility.
 - The triangle is to be determined by a diagonal line drawn across the lot (often 15 feet back along the property lines from the intersection of the property lines).
 - These provisions do not apply to the C&D District.

- NOTES**
- MARK THE NORTH SIDE OF TREE IN THE NURSERY AND ROTATE TREE TO FACE NORTH AT THE SITE WHENEVER POSSIBLE.
 - AT TIME OF PLANTING, DO NOT REMOVE OR CUT LEADER AND PRUNE ONLY DEAD OR BROKEN BRANCHES, CROSS OVER BRANCHES, AND WEAK OR NARROW CROTCHES. SOME INTERIOR TWIGS AND LATERAL BRANCHES MAY BE PRUNED. HOWEVER, DO NOT REMOVE THE TERMINAL BUDD OF BRANCHES THAT EXTEND TO THE EDGE OF THE CROWN.
 - STRUCTURAL PRUNING SHOULD NOT BE CONSIDERED AFTER ESTABLISHMENT PERIOD, USUALLY TWO GROWING SEASONS.
 - KEEP PLANTS MOIST AND SHADED UNTIL PLANTING.
 - AMENDED BACKFILL SHALL BE 15% COMPOST (PREFERABLY CLASSIFIED) AND 20% NATIVE AND/OR IMPORTED TOPSOIL.
 - COORDINATE WITH CITY FORESTRY FOR CURRENT INSECT AND DISEASE RECOMMENDATIONS PRIOR TO PLANTING.
 - DEEP WATER ALL PLANTS AT TIME OF PLANTING.



DECIDUOUS TREE PLANTING DETAIL
NOT TO SCALE SECTION

- 12.16.20. Planting of certain species of trees and shrubs in public rights-of-way Limited.
 - The tree lawn area is the landscape area within the public rights-of-way between the street curb and the sidewalk. It is unlawful to plant or cause to be planted any of the following:
 - Within the tree lawn area, coniferous trees that naturally grow taller than thirty (30) inches.
 - Within the tree lawn area, deciduous or evergreen shrubs that cannot be maintained to a height of less than thirty (30) inches.
 - For seven feet with a public sidewalk attached to the curb, no newly planted deciduous trees within two and one-half feet of the public sidewalk, nor any newly planted conifer trees within two feet of the sidewalk.
 - Specific tree spacing is required between trees in the public rights-of-way along city streets, and specific planting of trees in the public rights-of-way from streets, curbs, sidewalks and alleys spacing and other distances for seven trees that are adapted to grow within the city are set forth in section 12.16.07 of this chapter.
- 12.16.30. Planting, pruning, removal or altering of trees, shrubs-permit required.
 - It is unlawful for any person, including tree maintenance business to plant, prune, remove or structurally alter, as determined by the director of forestry and in accordance with section 12.16.07 of this chapter, any tree within the public street, alley or sidewalk rights-of-way, or other public place, without having first obtained a written permit from the director of forestry.
 - Persons desiring a permit to prune, remove or structurally alter any tree within the public street, alley or sidewalk rights-of-way, or other public place, must submit written application on forms provided to the office of the director of forestry. A permit fee of five dollars (\$5.00) for each single property address site where the proposed work will be conducted must be submitted with the application. Each permit issued will be valid for a single property address, and only for the type of work indicated by the applicant on the application form.
 - Persons desiring to plant trees within the public street, alley or sidewalk rights-of-way, or other public place, must submit written application for a permit on forms provided to the office of the director of forestry. There is no permit fee, however, prior to issuance of a permit, the director of forestry, or designee, may inspect the planting site requested in the application form.
 - The director of forestry is authorized to request any information deemed necessary to determine whether application approval will be provided. Applicants will agree in writing to hold harmless the city, its employees and agents from any and all claims that may arise as a result of the work performed for which a permit is issued.
 - All tree work performed under permits issued must be in compliance with section 12.16.07 of this chapter. Permits will be effective for thirty (30) days from date of issuance. The director of forestry shall assess a penalty fee of twenty dollars (\$20.00) per single property address where work has been conducted without a required permit.

- To assist in preventing dangerous or hazardous conditions, during emergency situations involving the need for immediate cutting, pruning, removal or other structural alterations of trees, the director of forestry, or designee, may issue a permit without prior written application being submitted, and may waive permit fees.
 - For emergency situations, persons conducting tree work within the public rights-of-way or upon public property must immediately report, but not later than the next business day, the action taken to the office of the director of forestry. Tree work will be inspected and formally documented by the director of forestry, or designee.
- 12.16.40. Responsibility of property owners.
 - It is the duty of the owner of property abutting any public street, alley or sidewalk rights-of-way, or other public place, to properly maintain and care for all trees, shrubs, hedges or vines located upon or affecting these areas. The director of forestry shall have the authority to require such property owners to provide proper maintenance, which includes, but is not limited to, providing a fourteen (14) foot clearance above street and alley surfaces and an eight foot clearance above sidewalk.
 - Property owners will be provided with written notice by the office of the director of forestry, advising of any maintenance work to be performed and a time frame in which the work is to be completed.
 - An owner of property abutting the public street, alley, or sidewalk rights-of-way, or other public place, is not responsible for the trimming of any tree, shrubs, hedges or vines necessary to provide clear visibility of traffic-control devices or other traffic controlling facility. It is the duty of the director of forestry to provide for any trimming work necessary for these situations.

- 12.16.10. Transportation requirements.
 - Traffic Visibility Across Corner Lots: A triangle space shall be provided across corner lots for adequate sight visibility. If the City Engineer or County Engineer finds that there are unusual circumstances, the requirements of this section may be altered. The City Engineer or County Engineer may approve the location of light or sign poles 12 inches or less in diameter in the triangle if visibility is not impeded.
 - This space is to be kept free from all obstructions to vision between the heights of 2 and 12 feet above the street grades. The responsibility lies on the landowner to maintain this visibility.
 - The triangle is to be determined by a diagonal line drawn across the lot (often 15 feet back along the property lines from the intersection of the property lines).
 - These provisions do not apply to the C&D District.

- NOTES**
- MARK THE NORTH SIDE OF TREE IN THE NURSERY AND ROTATE TREE TO FACE NORTH AT THE SITE WHENEVER POSSIBLE.
 - AT TIME OF PLANTING, DO NOT REMOVE OR CUT LEADER AND PRUNE ONLY DEAD OR BROKEN BRANCHES, CROSS OVER BRANCHES, AND WEAK OR NARROW CROTCHES. SOME INTERIOR TWIGS AND LATERAL BRANCHES MAY BE PRUNED. HOWEVER, DO NOT REMOVE THE TERMINAL BUDD OF BRANCHES THAT EXTEND TO THE EDGE OF THE CROWN.
 - STRUCTURAL PRUNING SHOULD NOT BE CONSIDERED AFTER ESTABLISHMENT PERIOD, USUALLY TWO GROWING SEASONS.
 - KEEP PLANTS MOIST AND SHADED UNTIL PLANTING.
 - AMENDED BACKFILL SHALL BE 15% COMPOST (PREFERABLY CLASSIFIED) AND 20% NATIVE AND/OR IMPORTED TOPSOIL.
 - COORDINATE WITH CITY FORESTRY FOR CURRENT INSECT AND DISEASE RECOMMENDATIONS PRIOR TO PLANTING.
 - DEEP WATER ALL PLANTS AT TIME OF PLANTING.

5200 Buffington Rd.
Atlanta, Georgia
30349-2996

Revisions:
Mark Date By
- 04.30.14 JRO

Mark Date By

Scale

For and on Behalf of Merrick & Company

MERRICK & COMPANY
5970 GREENWOOD PLAZA BLVD
GREENWOOD, NY 10871
303-752-0741

DATE: CHICK-FIL-A
RSU #03335
CHYENNE

4435 WINDMILL RD
WYOMING, WY 82009

SHEET TITLE

LANDSCAPE PLAN DETAILS

1/6 EDITION

Job No. - 65178259
Store # - 03335
Date - 03/28/14
Drawn By: JRO
Checked By: MM

Scale

Natura
Design Solutions
3000 Oak Valley Rd. Loveland, CO 80530
970-444-4444 natura@natura.com

L-20